

If you still do not know who your gas and electricity suppliers are please phone us on 505359 and we will try to sort it out for you.

If you don't register your new details with your new supplier you will be disconnected and will have to pay a reconnection charge of £85.00 (minimum) before they will reconnect you, which can take 14 days from the receipt of your payment.

Other useful numbers

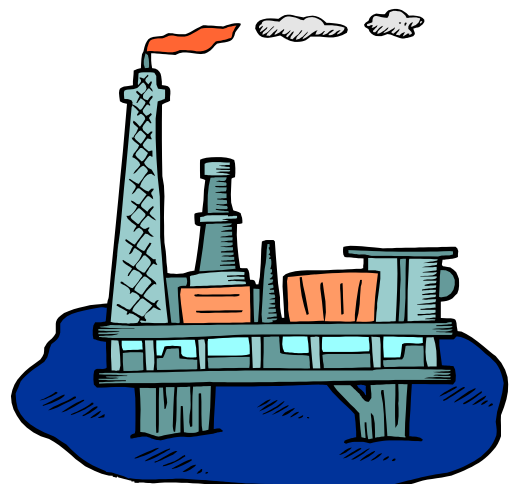
Gas emergencies
0800 111999

Energy Watch
08459 060 708

Who is my Gas & Electricity supplier ?



This information booklet gives you advice and information on how to register with your gas and electricity suppliers and the information you must provide as soon as you move into your new home.



When you move into your new home you will find you have gas and electricity meters. These meters may be prepayment, token or card operated. Which ever meter you have **you must register with your supplier as soon as you move in.** You will need to supply them with:

- your personal details—name and address
- meter readings (on the date that you move in)—which you will find on the front of your meter

All of Oxbode's properties are registered with Transco for gas and Npower for electricity, but that may have been changed by someone who lived in your home before you.

To find out who your supplier is you will need to phone a main call centre. You will need to phone separate call centres for gas and electricity.



Gas

0870 608 1524



Electricity

08456 777 706